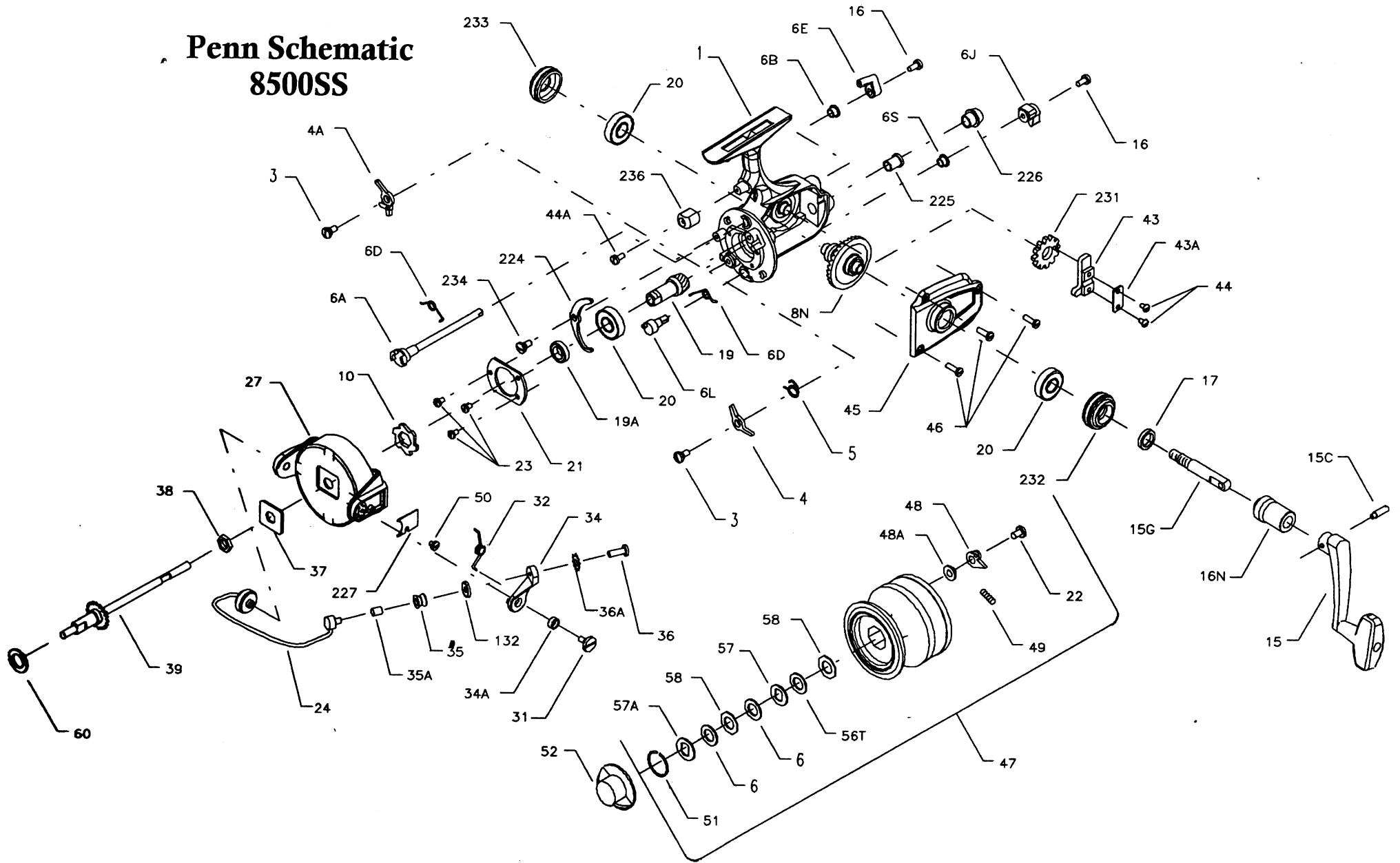


# Penn Schematic 8500SS



# Penn Reel Parts list for:

# Model: 8500SS

KEY PART			KEY PART		
NO	NO.	DESCRIPTION	NO	NO.	DESCRIPTION
1	1-8500	HOUSING	35A	35A-704	LINE ROLLER BUSHING
3	3-750	DOG SCREW (2 REQ.)	36	36-750	BAIL STUD SCREW
4	4-750	DOG	36A	36A-750	LOCK WASHER
4A	4A-750	SILENT DOG	37	37-706	ROTOR WASHER
5	5-704	CLICK DOG SPRING	38	38-710	ROTOR NUT
6	6-60	DRAG WASHER-HT 100 (2 REQ.)	39	39-750	SPOOL SHAFT
6A	6A-750	UPPER ECCENTRIC	43	43-750	CROSSWIND BLOCK
6B	6B-750	UPPER ECCENTRIC LINER	43A	43A-750	CROSSWIND BLOCK PLATE
6D	6D-710	ECCENTRIC SPRING	44	44-750	CROSSWIND BLOCK SCREW (2 REQ.)
6E	6E-750	ANTI-REVERSE LEVER	44A	44-750	TRIP BUMPER SCREW
6J	6J-750	SILENT DOG LEVER	45	45-7500	HOUSING COVER
6L	6L-750	SILENT ECCENTRIC	46	46-750	HOUSING COVER SCREW (3 REQ.)
6S	6B-700Z	SILENT ECCENTRIC LINER	47	47-8500	SPOOL (COMPLETE)
8N	8P-7500	MAIN GEAR	48	48-750	CLICK TOUNGE
10	10-750	RATCHET	48A	48A-750	CLICK TOUNGE WASHER
15	15-750	HANDLE	49	49-710	CLICK TOUNGE SPRING
15C	15C-750	HANDLE PIVOT SCREW	50	50-712	BAIL SPRING COVER SCREW
15G	15G-850	HANDLE PIVOT	51	51-704	RETAINING RING
16	16-910	ECCENTRIC SCREW (2 REQ.)	52	52-750	DRAG KNOB
16N	16N-850	HANDLE COLLAR	56T	56T-704	DRAG WASHER (TEFLON)
17	17-750	SEAL WASHER	57	57-704	DRAG WASHER KEYED
19	19-750	PINION	57A	57A-750	DRAG WASHER KEYED
19A	19A-750	PINION SPACER	58	58-704	METAL KEYED (OCTAGON) (2 REQ.)
20	20-704	BEARING (3-REQ.)	60	60-750	THRUST WASHER
21	21-750	BEARING COVER	132	132-750	ROLLER WASHER
22	22-750	SPOOL CLICK SCREW	224	224-750	TRANSFER LEVER
23	23-750	BEARING COVER SCREW (3 REQ.)	225	225-750	CROSSWIND SHAFT BUSHING
24	24-850	BAIL WIRE	226	226-7500	BUSHING CAP COVER
27	27-850	ROTOR	227	227-750	BAIL SPRING COVER
31	31-750	BAIL ARM SCREW	231	231-750	CROSSWIND GEAR
32	32-750	BAIL ARM SPRING	232	232-750	BEARING COVER (OPEN)
34	34-750	BAIL ARM	233	233-750	BEARING COVER (CLOSED)
34A	34A-750	BAIL ARM BUSHING	234	234-750	TRANSFER SCREW
35	35-750	LINE ROLLER	236	236-750	TRIP BUMPER
			*	300-7500	POWER HANDLE

**\*NOT SHOWN**

**NOTE: Many of [www.pennparts.com](http://www.pennparts.com) schematics include changes that were either made by Penn, or errors found and corrected by our parts dept.**

LAST UPDATE 8/27/03