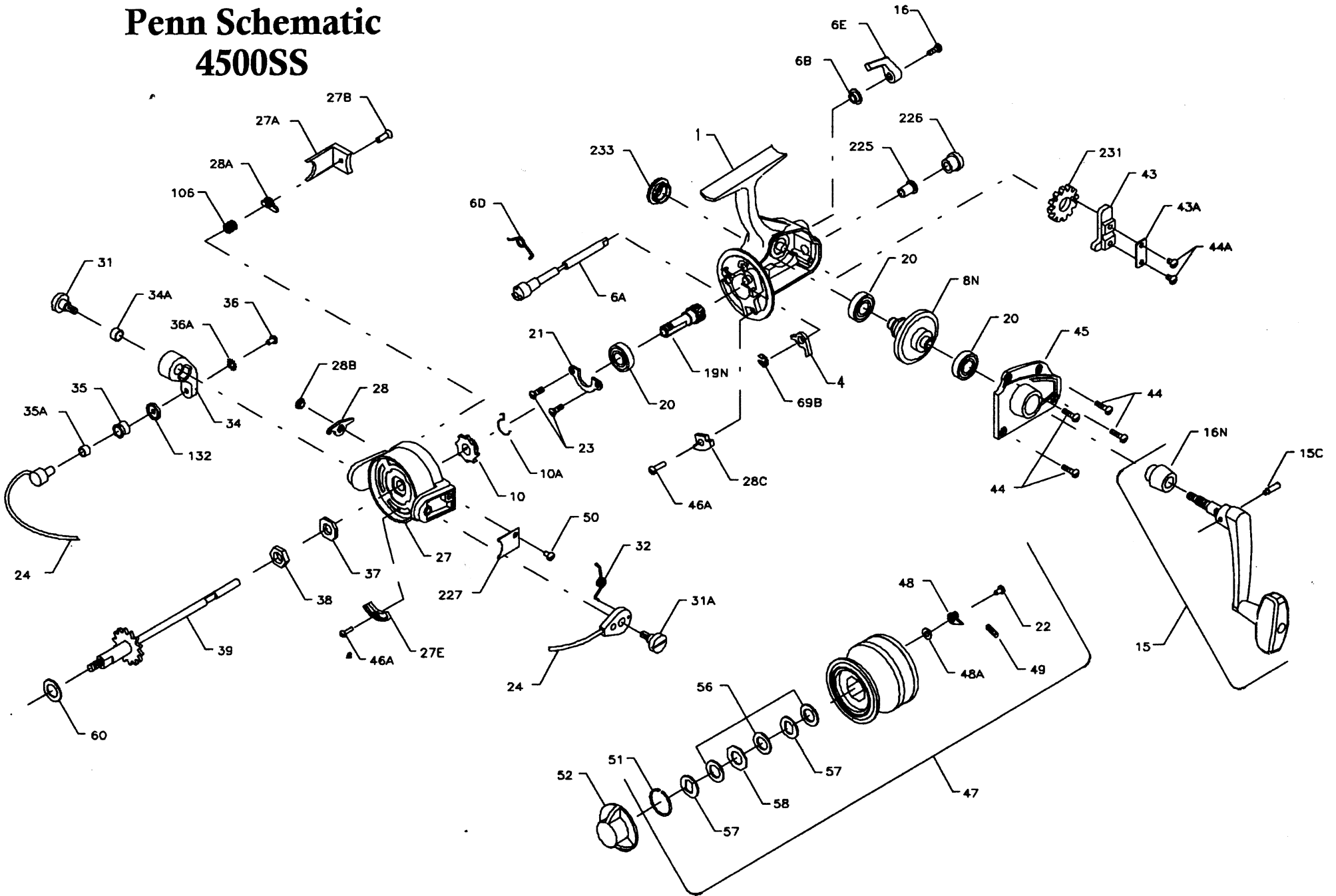


Penn Schematic 4500SS



Penn Reel Parts list for:

Model: 4500SS

KEY PART			KEY PART		
NO	NO.	DESCRIPTION	NO	NO.	DESCRIPTION
1	1P-4500	HOUSING	35A	35A-704	LINE ROLLER BUSHING
4	4N-4400	DOG (f/new model w/c-clip on dog post)	36	36-750	BAIL STUD CREW
4	4-450	DOG (f/older models)	36A	36A-750	LOCK WASHER
6A	6A-450	ECCENTRIC	37	37-450	ROTOR WASHER
6B	6B-750	ECCENTRIC LINER	38	38-550	ROTOR NUT
6D	6D-710	ECCENTRIC SPRING	39	39N-4500	SPOOL SHAFT
6E	6E-750	ECCENTRIC LEVER	43	43N-5500	CROSSWIND BLOCK
8N	8N-5500	MAIN GEAR	43A	43A-550	CROSSWIND BLOCK PLATE
10	10N-4400	RATCHET (f/new model w/c-clip on dog post)	44	44-704	COVER SCREW (4 REQ.)
10	10-440	RATCHET (f/older models)	44A	22-750	COVER SCREW (4 REQ.)
10A	230N-5500	ANTI REVERSE SPRING	45	45-5500	HOUSING COVER
15	15-5500	HANDLE	46A	46A-704	SCREW
15C	15C-650	HANDLE PIVOT SCREW	47	47-4500	SPOOL (COMPLETE)
16	16-910	ECCENTRIC SCREW	48	48-450	CLICK TOUNGE
16N	16-5500	HANDLE COLLAR	48A	48A-750	CLICK TOUNGE WASHER
19N	19N-4500	PINION	49	49-710	CLICK TOUNGE SPRING
20	20-722	BALL BEARING	50	50-712	BAIL SPRING COVER SCREW
21	21-450	BEARING COVER	51	51-710	RETAINING RING
22	22-750	SPOOL CLICK SCREW	52	52-550	DRAG KNOB
23	23-750	BEARING COVER SCREW	56	56-710	DRAG WASHER-HT 100 (3 REQ)
24	24-450	BAIL WIRE	57	57-710	METAL KEYED WASHER (2 REQ.)
27	27-4500	ROTOR	58	58-710	METAL WASHER (OCTAGON)
27A	27A-450	BAIL TRIP COVER	60	60-450	THRUST WASHER
27B	27B-420	ROTOR END SCREW	69B	69B-4400	RETAINING RING
27E	27E-5500	BALANCE WEIGHT	106	106-5500	LEVER SPRING
28	28-450	TRIP LEVER	132	132-450	ROLLER WASHER
28A	28A-440	CAM LEVER	225	225-5500	CROSSWIND SHAFT BUSHING
28B	28B-5500	TRIP LEVER BUSHING	226	226-5500	BUSHING CAP COVER
28C	28C-440	TRIP CAM	227	227-440	BAIL SPRING COVER
31	31-550	BAIL ARM SCREW	231	231N-4500	CROSSWIND GEAR
31A	31A-450	TRIP ARM SCREW	233	233-440	BEARIN COVER
32	32-440	BAIL SPRING	**	300-5500	POWER HANDLE
34	34-450	BAIL ARM	**NOT SHOWN		
34A	34A-550	BAIL ARM BUSHING			
35	35-704	LINE ROLLER			

NOTE: Many of www.pennparts.com schematics include changes that were either made by Penn, or errors found and corrected by our parts dept.