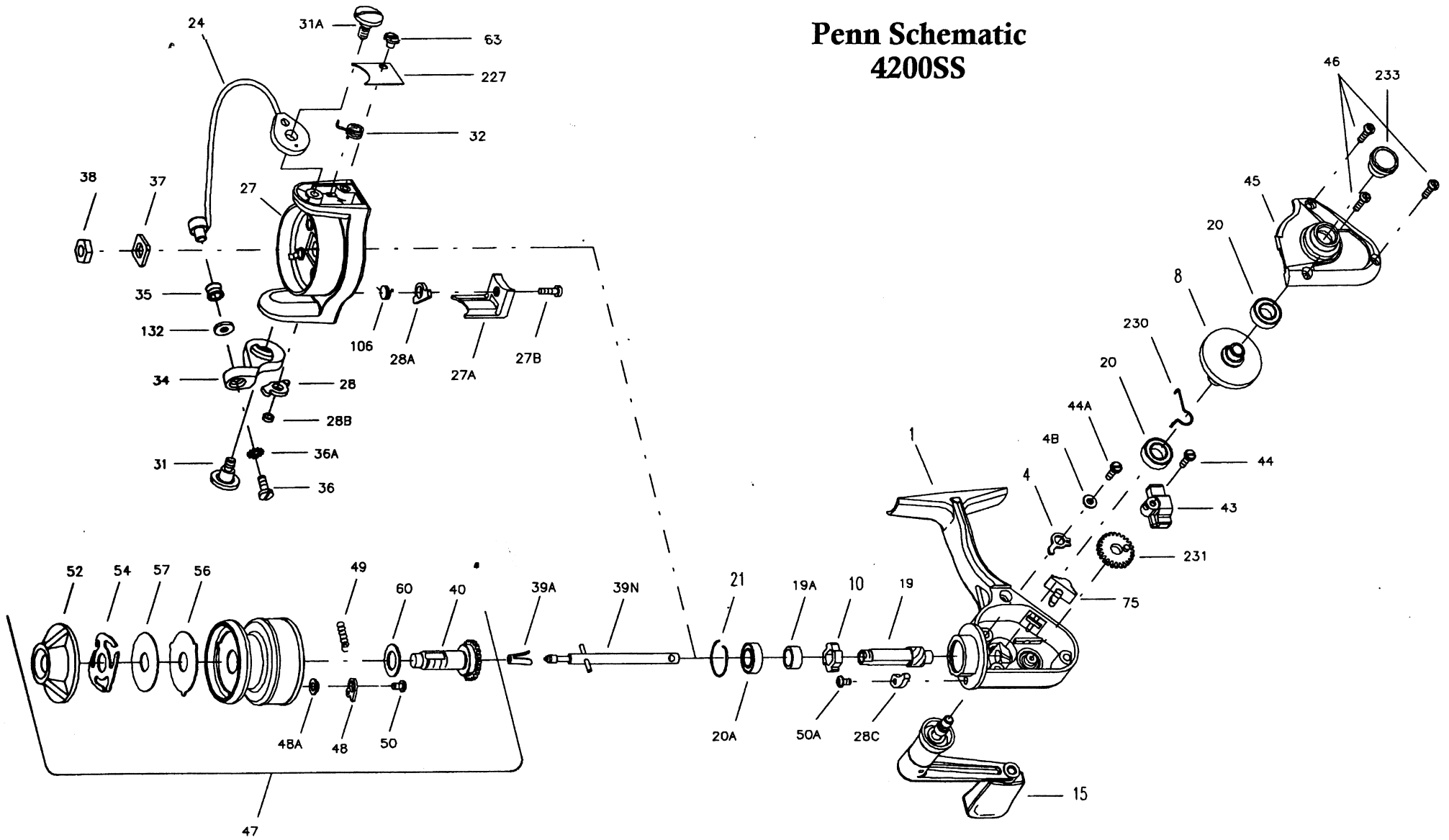


Penn Schematic 4200SS



Penn Reel Parts list for:

Model: 4200SS

KEY PART			KEY PART		
NO	NO.	DESCRIPTION	NO	NO.	DESCRIPTION
1	1-4200	HOUSING	38	38-720	ROTOR CUP NUT
4	4-4200	DOG	39A	39A-4300	SPOOL RETAINER
4B	4B-4200	DOG LEVER BUSHING	39N	39N-4200	SPOOL SHAFT
8	8-4200	MAIN GEAR ASSEMBLY	40	40-4200	SPOOL SLEEVE COMPLETE
10	10-4200	RATCHET	43	43-4200	CROSSWIND BLOCK
15	15-4200	HANDLE (COMPLETE)	44	44-4200	CROSSWIND BLOCK SCREW
19	19-4200	PINION	44A	46A-4300	DOG SCREW
19A	19A-4200	PINION SPACER	45	45-4200	HOUSING COVER
20	20-4200	BALL BEARING (MAIN GEAR)	46	46-4300	HOUSING COVER SCREW (3 REQ.)
20A	55-4200	BALL BEARING (PINION)	47	47-4200	SPOOL (COMPLETE)
21	21-4200	BERING LOCK RING	48	48N-4300	CLICK TONGUE
24	24-420	BAIL WIRE ASSEMBLY	48A	48A-4300	CLICK TONGUE WASHER
27	27-4200	ROTOR CUP	49	49-4300	CLICK SPRING
27A	27A-4200	BAIL TRIP COVER	50	63A-2.5FR	CLICK SPRING SCREW
27B	27B-420	BAIL TRIP COVER SCREW	50A	46A-4300	TRIP CAM SCREW
28	28-420	TRIP LEVER	52	52-716	DRAG KNOB
28A	28A-440	CAM LEVER	54	54-4200	DRAG SPRING
28B	28B-4200	TRIP LEVER BUSHING	56	56-4200	DRAG WASHER HT 100
28C	28C-4200	TRIP CAM	57	57-4200	DRAG WASHER-METAL
31	31-420	BAIL ARM SCREW	60	60-716	SPOOL SLEEVE WASHER
31A	31A-420	BAIL CAM SCREW	63	63-500S	BAIL SPRING COVER SCREW
32	31-420	BAIL SPRING	75	75-4300	ECCENTRIC BUTTON
34	34-420	BAIL ARM	106	106-5500	CAM LEVER SPRING
35	35-420	LINE ROLLER	132	132-420	ROLLER WASH
36	36-420	BAIL STUD SCREW	227	227-4300	BAIL SPRING COVER
36A	36A-750	LOCK WASHER	230	230-4200	FRICTION DOG SPRING
37	37-420	ROTOR CUP WASHER	231	231-4200	CROSSWIND GEAR
			233	233-4200	BEARING COVER

NOTE: Many of www.pennparts.com schematics include changes that were either made by Penn, or errors found and corrected by our parts dept.