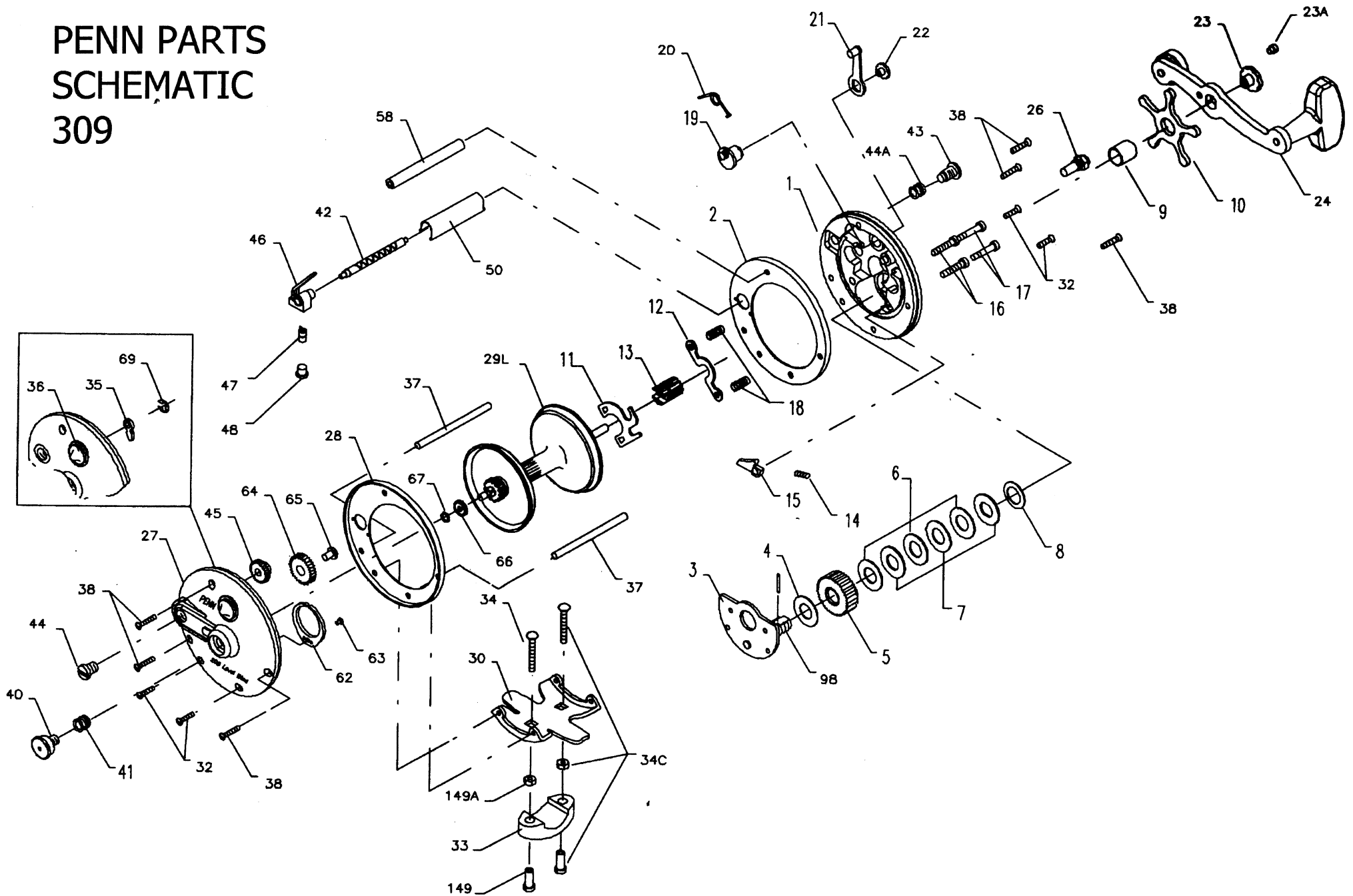


# PENN PARTS SCHEMATIC 309



# Penn Reel Parts list for:

# Model: 309

## KEY PART

| NO NO.      | DESCRIPTION                                   |
|-------------|---|
| 1 1-309     | R.S. PLATE                                    |
| 2 2-309     | R.S. RING                                     |
| 3 3-309     | BRIDGE W/ SLEEVE                              |
| 4 4-60      | FIBER WASHER                                  |
| 5 5-500     | MAIN GEAR                                     |
| 6 6-309     | DRAG WASHER                                   |
| 7 7C-500    | DRAG WASHER (METAL SET)                       |
| 8 8-60      | TENSION WASHER                                |
| 9 9-60      | SPACING SLEEVE                                |
| 10 10-49    | STAR DRAG                                     |
| 11 11-60    | ECCENTRIC JACK                                |
| 12 12-60    | PINION YOKE                                   |
| 13 13-85    | PININO GEAR                                   |
| 14 14-99    | DOG SPRING                                    |
| 15 15-309   | DOG   |
| 16 16-60CH  | LOWER BRIDGE SCREW (2 REQ.)                   |
| 17 17-60CH  | UPPER BRIDGE SCREW (2 REQ.)                   |
| 18 18-60    | CLUTCH SPRING                                 |
| 19 19-309   | ECCENTRIC                                     |
| 20 20-60L   | ECCENTRIC SPRING                              |
| 21 21-309   | ECCENTRIC LEVER                               |
| 22 22-60CH  | ECCENTRIC SCREW                               |
| 23 23-60    | HANDLE SCREW                                  |
| 23A 110-60  | HANDLE LOCK SCREW                             |
| 24 24-66    | HANDLE  |
| 26 26-60    | R.S. BEARING                                  |
| 27 27-309   | L.S. PLATE                                    |
| 28 28-309   | L.S. RING                                     |
| 29L 29L-309 | SPOOL ALUMINUM                                |
| 30 30-66    | STAND   |
| 32 32-16CH  | RIGHT/LEFT SIDE STAND SCREW (2 REQ. PER SIDE) |

## KEY PART

| NO NO.       | DESCRIPTION                                  |
|--------------|--|
| 33 033 113   | ROD CLAMP                                    |
| * 33R-200    | RINGED CLAMP (OPTIONAL)                      |
| 34 34-45     | CLAMP SCREW (ONLY)                           |
| 34C 34C-45   | CLAMP SCREW W/ NUTS                          |
| 35 35-60     | CLICK TOUNGE                                 |
| 36 36N-209   | CLICK BUTTON                                 |
| 37 37-65     | FRAME POST (2 REQ.)                          |
| 38 38-8      | RIGHT/LEFT SIDE POST SCREW (3 REQ. PER SIDE) |
| 40 40-60     | L.S. BEARING                                 |
| 41 41-60     | L.S. BEARING SPRING                          |
| 42 42-209    | WORM   |
| 43 44N-109   | R.S. WORM BEARING                            |
| 44 43-109    | L.S. WORM BEARING                            |
| 44A 57-109   | WORM BEARING SPRING                          |
| 45 45N-209   | WORM GEAR                                    |
| 46 46-309    | LINE GUIDE                                   |
| 47 47-109    | PAWL   |
| 48 48-109    | PAWL COVER                                   |
| 50 50-209    | WORM SHEILD                                  |
| 58 58-209    | SLOTTED POST                                 |
| 62 62-309    | CLICK SPRING                                 |
| 63 63-209    | CLICK SPRING SCREW                           |
| 64 64-309    | IDLER GEAR                                   |
| 65 65-209    | IDLER GEAR SCREW                             |
| 66 66-209    | LEVEL WIND DRIVE GEAR                        |
| 67 67-209    | DRIVE GEAR LCOK SPRING                       |
| 69 69B-600   | CLICK BUTTON RETAINING SPRING                |
| 98 98-60     | GEAR SLEEVE                                  |
| 149 149-45   | CLAMP NUT (2 REQ.)                           |
| 149A 149-200 | HEX NUT (2 REQ.)                             |

**NOTE: Many of [www.pennparts.com](http://www.pennparts.com) schematics include changes that were either made by Penn, or errors found and corrected by our parts dept.**